

Using Your CLEANSE Light™

1. Remove lamp from its packaging, placing lamp base flat on a steady surface.
2. Connect the power adapter using the connector in the rear of the lamp near its base.
3. Plug the power adapter into a standard household 240V AC outlet. **Only use with the supplied power adapter to avoid the risks of damage or fire.**
4. The power switch is a “touch” switch that controls on/off, the LED brightness settings, and the mode function of the lamp.
5. To turn the lamp on, touch the switch once. To adjust brightness touch the switch again. The lamp has 3 brightness settings. The fourth touch will turn the light off.
6. Touch and hold the switch to change light modes. The three modes are; **ClearSun® LED, Sanitising**, and **ClearSun® + Sanitising**. ClearSun® + Sanitising mode utilises both the ClearSun® LEDs and Sanitising LEDs simultaneously to provide continuous cleaning while using the lamp. The active mode will be indicated by the light below the icons. If indicator light ☀️ is illuminated, ClearSun® mode is on. If indicator light ✨ is illuminated, Sanitising mode is on. If both indicator lights (☀️ and ✨) are illuminated, ClearSun® + Sanitise mode is on.
7. To reposition the light, hold the lamp base and grasp either the flex-neck or shade depending on adjustment sought. **Do not force** the shade outside its allowable adjustable range as excessive adjustment may cause damage.

Setting The Alarm

Alarm and Snooze Function Setting

1. In normal mode (⊙), press mode button to enter alarm mode, indicated on screen by 🚨 icon.
2. In alarm mode, press **setting button** to enter alarm setting, press setting button again for next setting, the sequence of setting is: hour – minute – snooze – music and then exit.
3. Press up and down buttons to adjust alarm time sequence.
4. In alarm mode, press up button and down button to turn on/off alarm and snooze function. Music note icon 🎵 will light up on the display to indicate alarm is set. Zzz will appear on the display to indicate snooze is activated.
5. When alarm time reached, alarm will ring for 1 minute, then snooze and ring again. Press setting button to turn off alarm or touch either up or down button to activate snooze. Snooze defaults to 60 minutes, if loss of power occurs.

Battery Replacement

1. This lamp uses a CR2032 battery as a back up for the clock display. The battery compartment is located on the bottom of lamp body base.
2. To remove/install button cell battery: use a screwdriver to remove battery compartment door. Button cell battery is to be installed with the + or flat side facing upward.

8. Turn lamp off unplug and let it cool for a minute before handling. The LED panel might get hot after several hours of continuous use. **Do not** place your hands directly on LED light panel.
9. Do not use with an extension cord unless the plug can be fully and safely inserted.
10. The lamp head included with this unit cannot be replaced.

Using The Control Panel

▼	⬆	⚙	M
Down	Up	Setting	Mode
Press to decrease when in setting mode.	Press to increase when in setting mode.	To set time and calendar; in alarm mode, press to turn off alarm.	Press to set alarm and snooze.

Calendar and Clock Setting

The control panel is on the bottom of the lamp base.

1. In normal mode, press setting button to enter setting mode, press setting again for next setting. The sequence of setting is: hour – minute – year – month – date.
2. In setting mode, press mode button to quit setting. It will automatically quit to normal mode if idle for 60 seconds.
3. In normal mode, press up button to switch between 12h and 24h display.
4. If day shown is wrong, reset year. Press setting button three times in normal mode, adjust year and press mode to set.

Battery Disposal

- The CLEANSE Light™ uses a CR2032 battery. Batteries contain harmful materials, and are classified as hazardous waste. They must never be thrown away with daily rubbish. They should be returned to the manufacturer or your local recycling service for disposal. **Do not incinerate.**
- Serious Readers® is WEEE registered and provides a disposal service at Unit 15 – 16 Faraday Road, Aylesbury, HP19 8RY.

Product Safety

- **This product contains a button battery. If swallowed, it could cause severe injury or death in just 2 hours. Seek medical attention immediately.**
- If the battery compartment does not close securely, stop using the product.
- Avoid extreme temperatures.
- Use original or certified cables. If the external flexible cable or cord of this luminaire is damaged, it must be replaced by the manufacturer in order to avoid a hazard.
- Do not alter the plug.
- Indoor use only.
- Do not expose to liquids.
- Avoid dropping.
- Do not disassemble.
- Keep new and used batteries away from children.

Specifications

Height: 10.75” – 18.75” (27 – 48cm)	Maximum Lumen Output – 447
Weight: 1.1lbs (500g)	Brightness Settings – 3
Base Size – 2.6” x 3.6” (6.5 x 9cm)	LED Life – 40,000 hours
Colour Rendering Index – 95+ (in ClearSun® mode)	USB: 5V, 2.1A
Colour Temperature – 5,000K (in ClearSun® mode)	Power Adapter Specification:
	Input: AC 100-240V, 50/60 Hz, 1.0A
	Output: 12V DC, 2.0A

CONTINUOUS
SANITISATION

WARRANTY
1 year

NO ASSEMBLY NEEDED

0800 028 1890

+44 (0) 1296 390390

www.seriousreaders.com

Serious Readers, Chapel of Light, Bierton,
Bucks, HP22 5DW, Great Britain

SR1218

Where can I get replacement display batteries for the CLEANSE Light™?

The lamp head is a sealed unit and cannot be replaced.

Can I replace the LEDs?

Plug it into the USB port on the rear of the light.

How do I charge my phone?

at all times to fully enjoy the benefits of the CLEANSE Light™.

ClearSun® + Sanitising mode or the Sanitising mode is used temperature and the humidity. We recommend the of factors including the type of bacteria, the ambient CLEANSE Light™. The time taken depends on a number The cleaning process starts as soon as you turn on the

How long does sanitisation take?

Where should I put my phone to sanitise it?

Place objects as close to the Cleanse Light™ as possible. The further away from the light, the weaker the sanitising power. The area cleaned is determined by the spread and direction of the light. Only illuminated areas gain the benefit of continuous cleaning.

Frequently Asked Questions

CLEARSE
Light™
Instructions

SPECTRA CLEAN™

We hope you will love your new CLEANSE Light™

We are all now acutely aware of the germs that live in the air around us, and on surfaces we touch. For example, a typical mobile phone is covered in an average of 25,000 bacteria per square inch.

The CLEANSE Light™ uses ground-breaking SpectraClean™ visible light disinfection technology to kill harmful bacteria while at the same time doubling up as a highly effective, portable light. You can even use the disinfection-only mode to sanitise devices as you sleep.

The CLEANSE Light™ also uses ClearSun® Technology to more closely match daylight, helping you see small print and colours in higher definition. We believe that shedding better light makes a life-enriching difference to our lives so we hope that you will love this revolutionary product packed with technology.

Congratulations

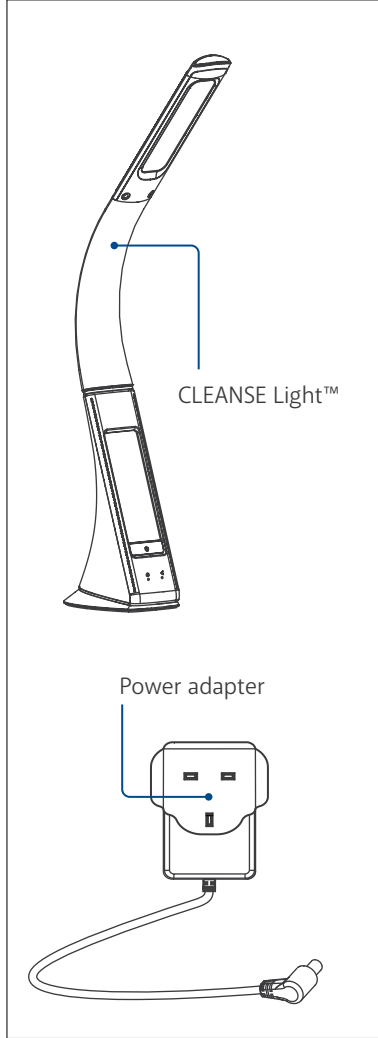
Alex Pratt OBE
Founder

Customer Service

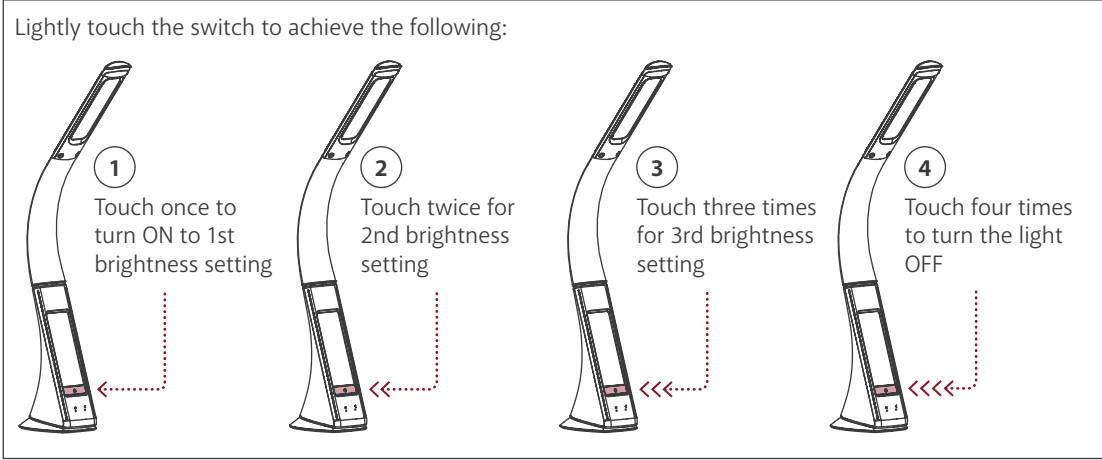
To purchase spare batteries, to request a Serious brochure or to purchase any light in the Serious family, call or visit us.

+44 (0) 1296 390390
www.seriousreaders.com

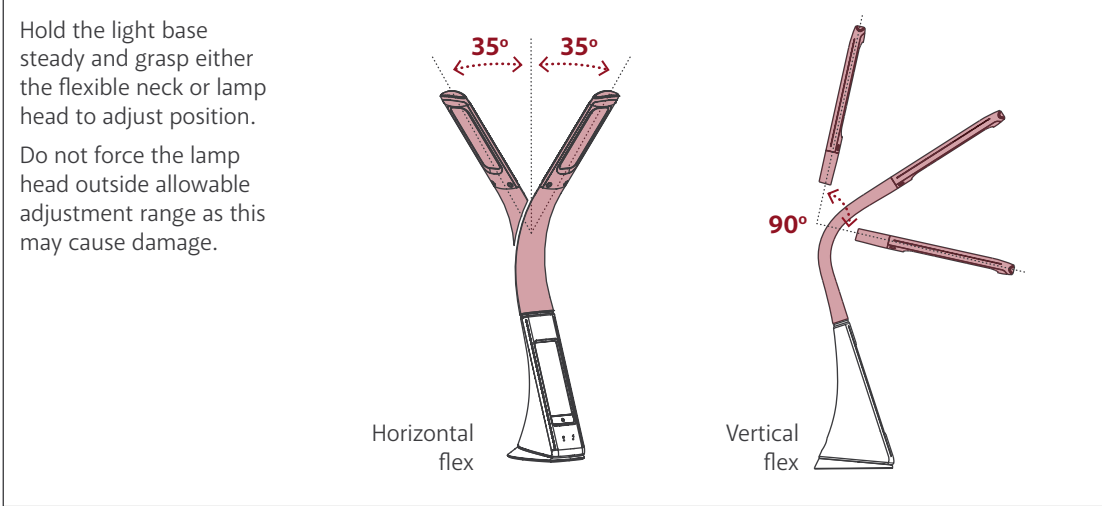
What's in the box



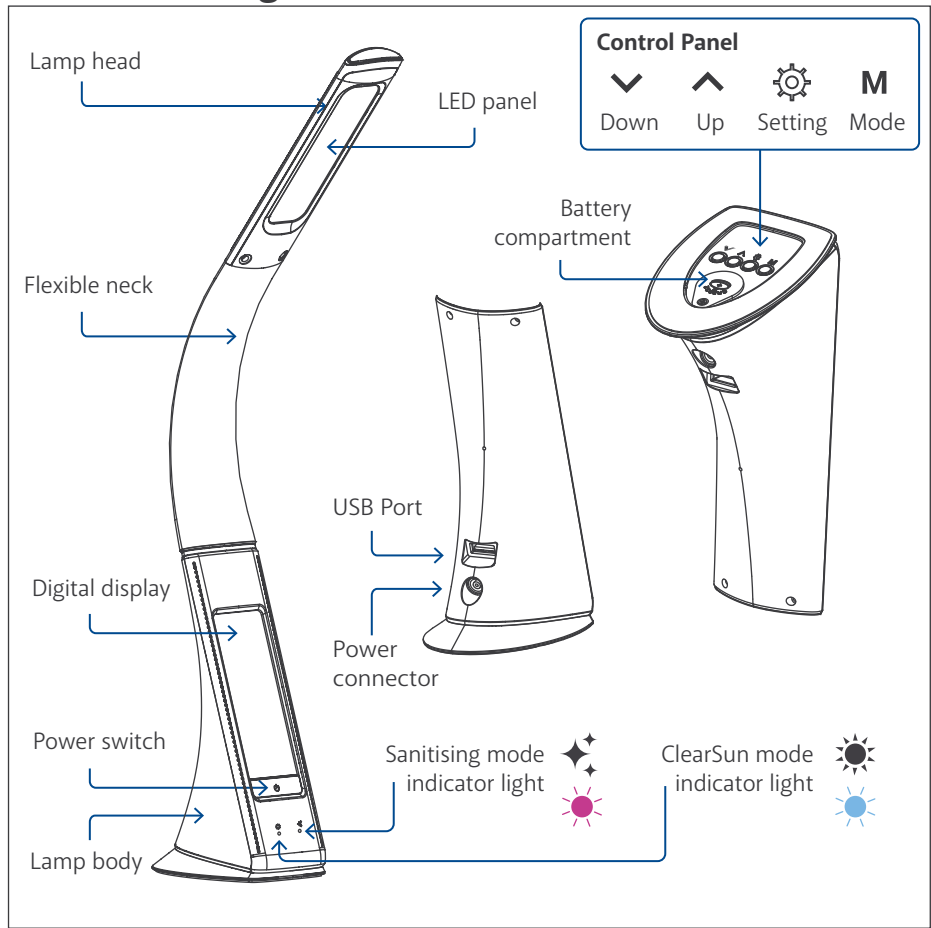
Changing the brightness settings



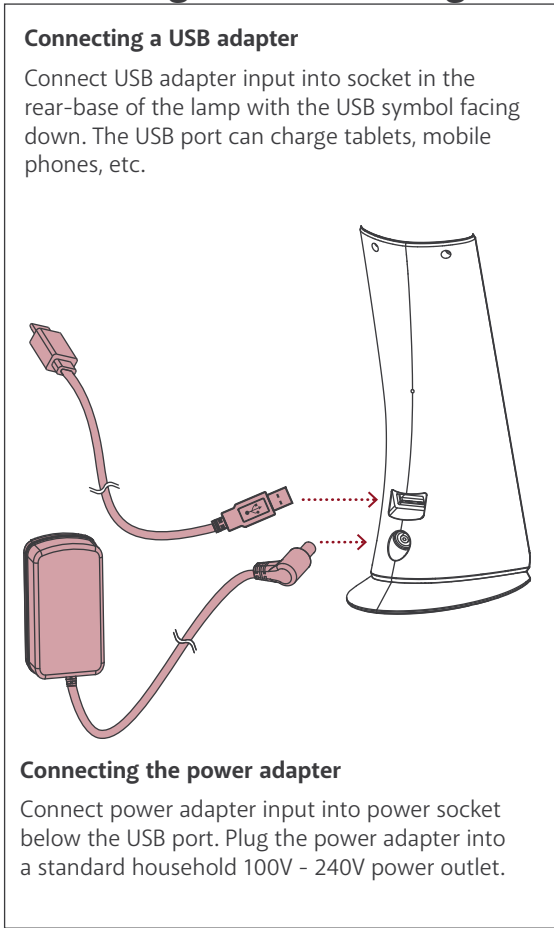
Directing the light beam



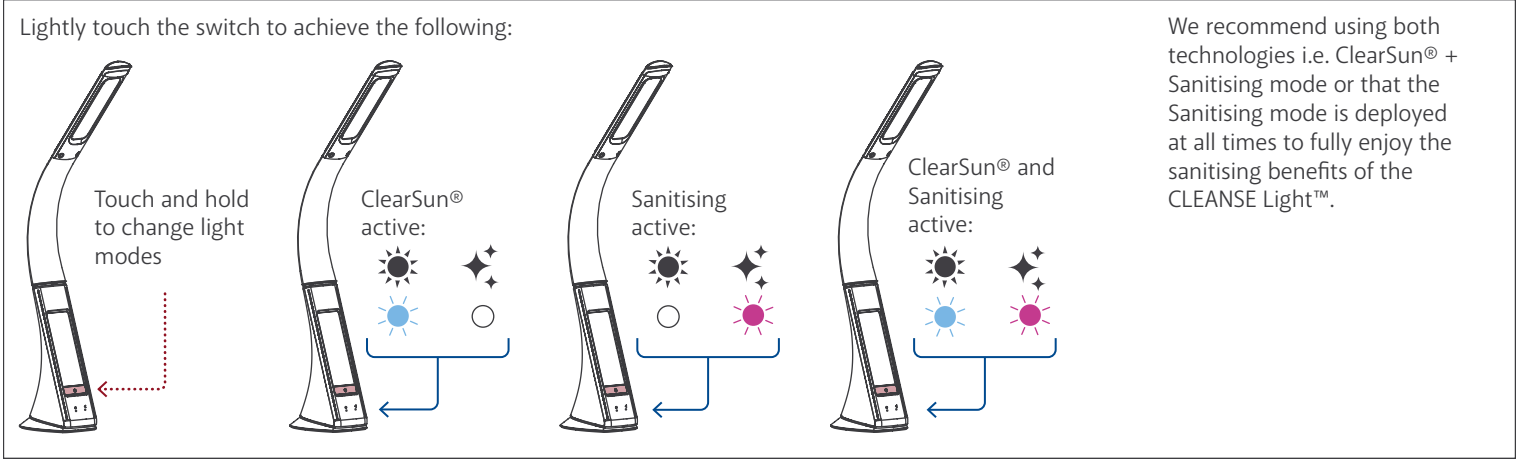
The CLEANSE Light™



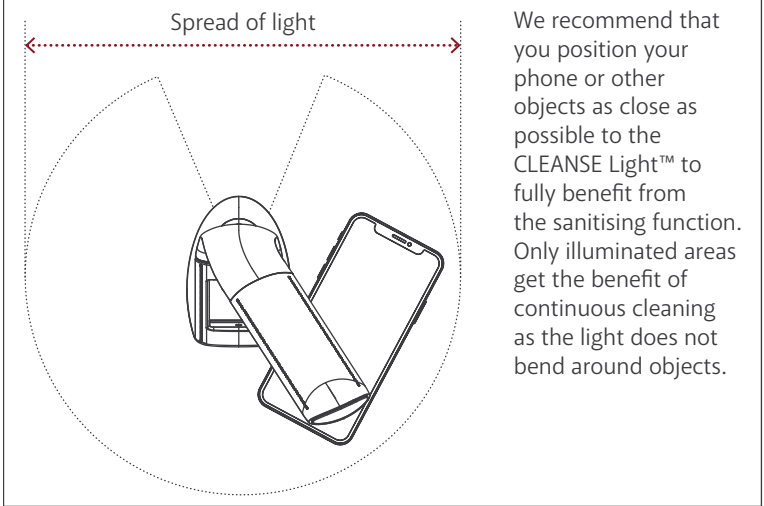
Connecting the CLEANSE Light™



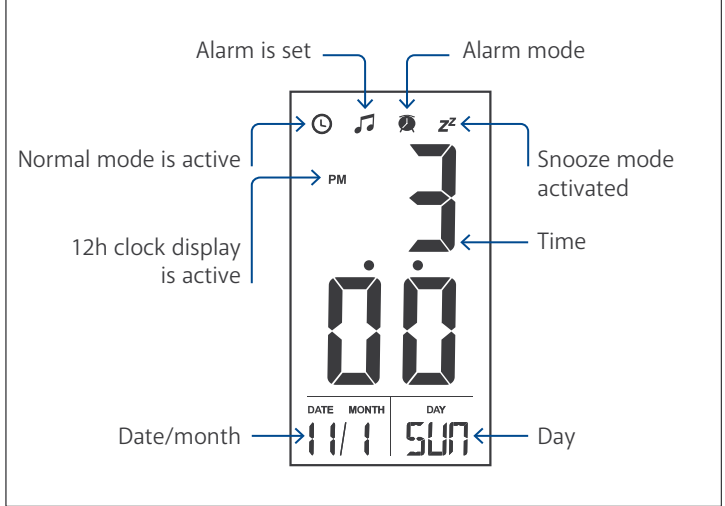
Changing the light modes



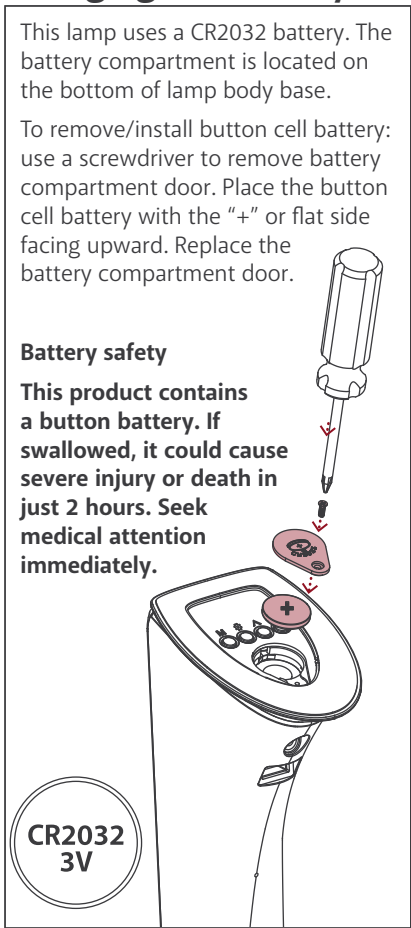
Sanitisation



Understanding the display



Changing the battery



Using the control panel

