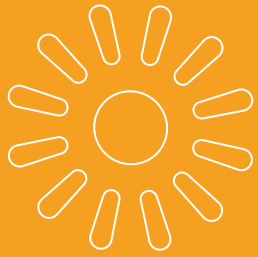


SR1200



### Further Help

Contact us for spare bulbs and batteries, or more information on Serious products.

**+44 (0) 1296 390 390**

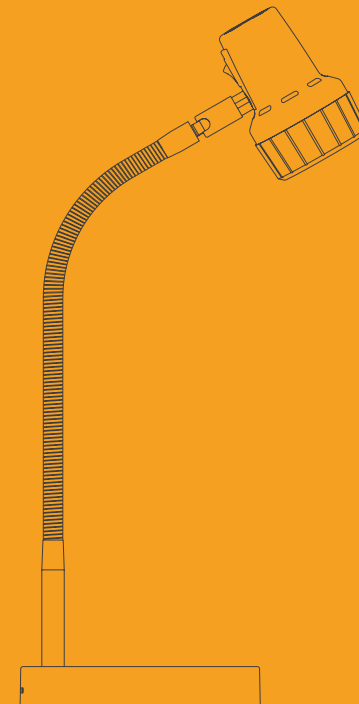
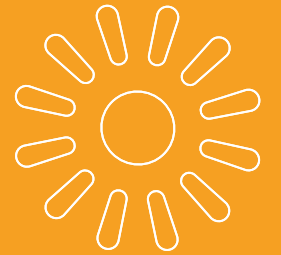
**seriousreaders.com**

Serious Readers | Chapel of Light | Bierton  
Bucks | HP22 5DW | Great Britain



# Compact Cordless

## Instructions



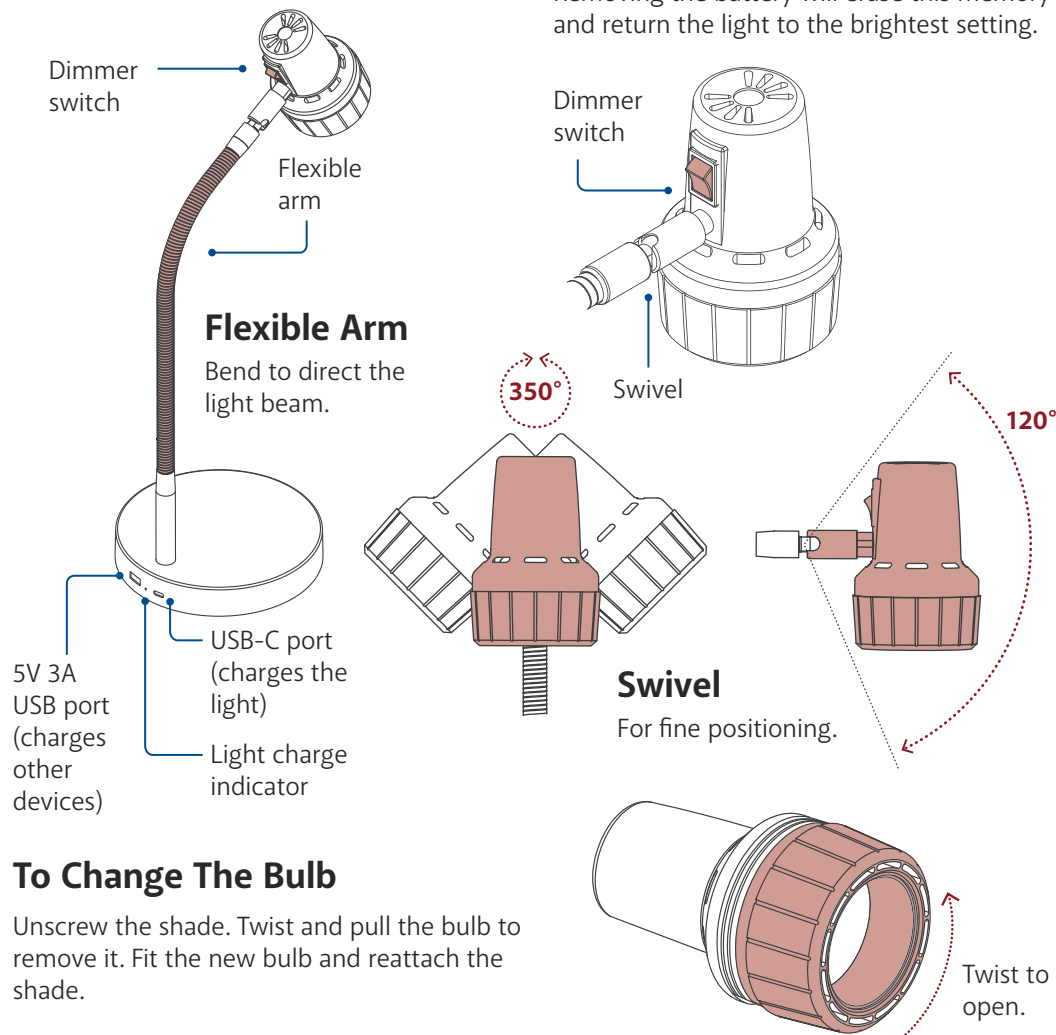
Keep for reference



# Compact Cordless Light

## Getting Started

Your light will not be fully charged on arrival. You will need to charge it before use. Connect the charging cable to both the USB-C port on the light base, and the charging plug, then connect to the mains socket. The light charge indicator between the two USB ports will flash. Once fully charged, it will stay lit. The light can be used while charging.



## To Change The Bulb

Unscrew the shade. Twist and pull the bulb to remove it. Fit the new bulb and reattach the shade.

## Dimmer

Use a quick, firm click to turn the light on and off. To activate the dimmer, hold down the switch and the light output will begin to cycle. Release the switch at the desired brightness. The dimmer cycles between 30% and full brightness.

The dimmer memory will return the light to the previous brightness level when next used.

Removing the battery will erase this memory and return the light to the brightest setting.

# Compact Cordless Light

## Battery Life

The battery will last up to 6 hours at full power, and more than 20 hours when fully dimmed on a single charge. It takes approximately 5.5 hours to fully charge from empty. The light charge indicator will flash while it is charging. When fully charged it will stop flashing and remain lit. It will start to flash again when it falls below 20% battery power. The USB port on the base is for charging tablets and phones.

## Battery Replacement

The battery will last for at least 500 charge cycles. To replace it, unclip the cover and remove the old battery. Insert the replacement ensuring the metal contacts line up with those inside. Refit the cover.

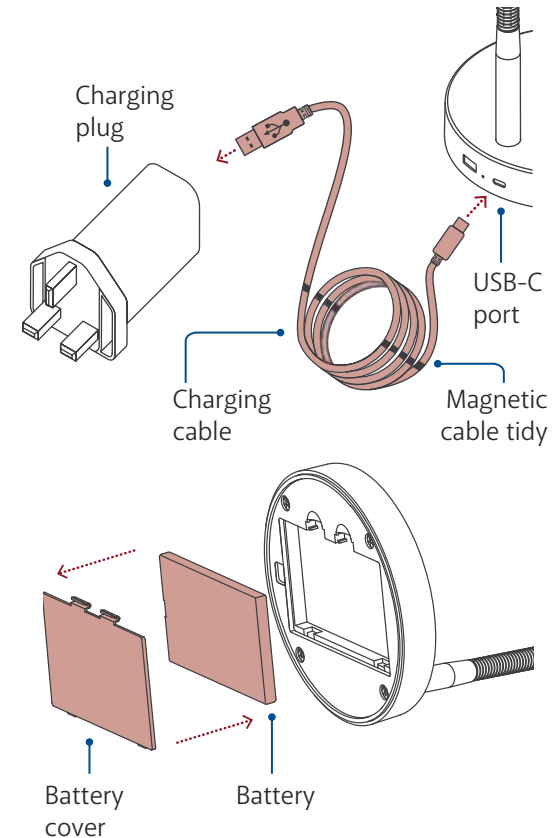
## Battery Disposal

All batteries must be disposed of responsibly. Rechargeable batteries contain potentially harmful metals and are classified as hazardous waste. They must not be thrown away in the daily rubbish. Take them to your local recycling centre for disposal or return them to us. At the end of the product's life, dispose of the entire unit properly. Serious® is WEEE registered and provides a disposal service at Unit 15-16 Faraday Road, Aylesbury, HP19 8RY.

## Safety Reminder

Please note the following safety advice:

- Intended for indoor use only.
- Keep out of the reach of children.
- Do not disassemble.
- Avoid using in extreme temperatures.
- Use only original or certified cables.



## Replacement Parts

For replacement bulbs and batteries visit:

[seriousreaders.com/info/compactcordless](https://seriousreaders.com/info/compactcordless)

Or contact us on +44 (0) 1296 390 390